



# **2022-2026**

## **Topeka Collegiate Strategic Plan**

Dear Eagles,

Welcome to the 2021-2022 School Year! As the Chair of the Topeka Collegiate Board of Trustees, I know that this is a special time for students and parents alike. It's a fresh start for all of us. New friends, new experiences, and new beginnings. That's why it's the perfect time to launch the 2022-2026 Strategic Plan.

This document is critical to our school's success in the years to come. All of us will have a role - no matter how big or how small - in its implementation. I believe it is essential that we reference the Strategic Plan often and that we truly understand it.

To help you navigate the Strategic Plan, I'd like to take a moment to explain the key components. The plan begins with an **updated mission statement** and, for the first time in our school's history, articulates the **five value statements** to guide our work.

Next you'll see three strategic pillars: **Educate, Connect, and Sustain**. There are **three priorities** within each pillar. In the coming weeks, the Board of Trustees will finalize a complete **action plan** to ensure that we successfully implement these priorities.

I'm energized and inspired by our new Strategic Plan - and I hope you are, too! Thank you to everyone who contributed to this process. Now let's get started!

Karen K. Linn, Chair  
Topeka Collegiate Board of Trustees



# Mission & Value Statements

**Our mission is to inspire and prepare every student for a successful future through academic excellence, active citizenship, and humanitarian ideals.**

We value and support the uniqueness of every individual in our school community.

We value bold and thoughtful humanitarianism rooted in citizenship, service to others, and social responsibility.

We value a solutions-oriented approach to academic excellence through critical thinking, creativity, and a lifelong love of learning.

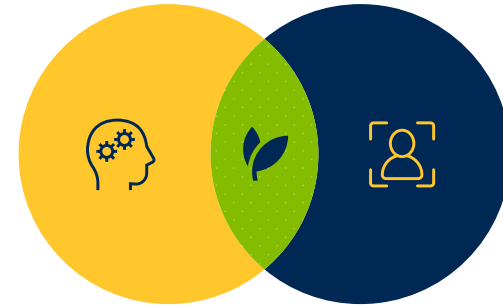
We value our independent school autonomy and agility to customize vibrant programming for the benefit of every student.

We value a nurturing environment that fosters compassion, curiosity, collaboration, integrity, individuality, and inclusivity.



# Strategic Pillars

The Strategic Map shown on the cover of this document (and to the right) represents the three strategic pillars that will guide our Strategic Plan from 2022-2026.



## EDUCATE

Provide an unparalleled foundational education.



## SUSTAIN

Ensure a strong future through strategic investments.



## CONNECT

Foster an inclusive and supportive community.



# Educate



To provide an unparalleled foundational education, we will:

- 1) Recruit and retain the best educators for every classroom.
- 2) Deliver cutting-edge curriculum and programming to maximize student learning.
- 3) Teach and model a growth mindset in support of lifelong learning.



Best educators



Cutting-edge programming



Growth mindset



1:8 Teacher to student ratio (2021).



237 Years

Collective Teaching Experience at Topeka Collegiate (2021).



2019

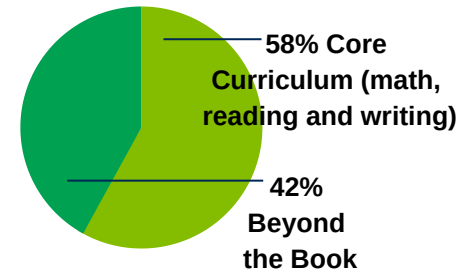


2020



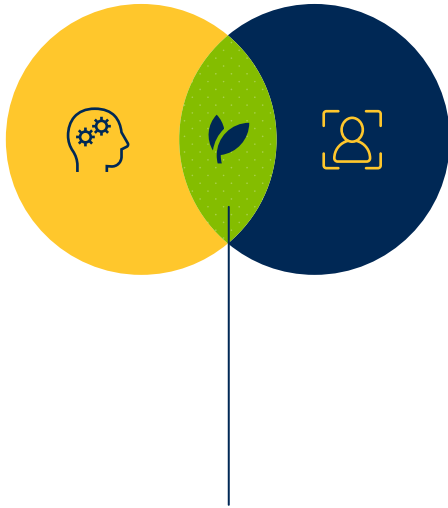
2021

**Alumni Scholars:** While alumni represent less than 2% of Shawnee County Seniors, they are well-represented among the county's National Merit Scholars.



**Beyond the Book:** On average, students spend 42% of their school day in experiential learning classes to encourage lifelong learning (i.e. foreign language, art, music, health and wellness).

# Sustain



To ensure a strong future through strategic investments, we will:

- 1) Improve our campus to ensure every classroom is a safe, effective learning environment.
- 2) Provide technology-rich spaces for innovative learning.
- 3) Enhance and maintain best practices and policies for an Eagles Endowment and related fundraising strategies.



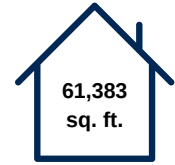
Safe, effective learning environment



Technology-rich spaces



Eagles Endowment

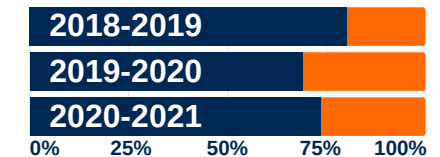


**Campus:** The main school building was built in 1953. It was purchased by Topeka Collegiate in 1996.

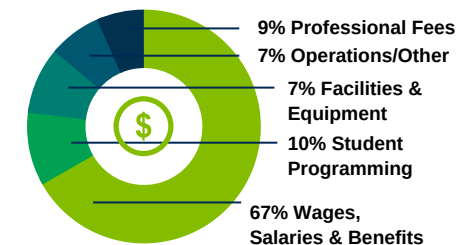
**1:1 Tech Ratio**



**Technology:** There is at least one age-appropriate technology tool available for every student (i.e. Ipad, laptop, or computer).

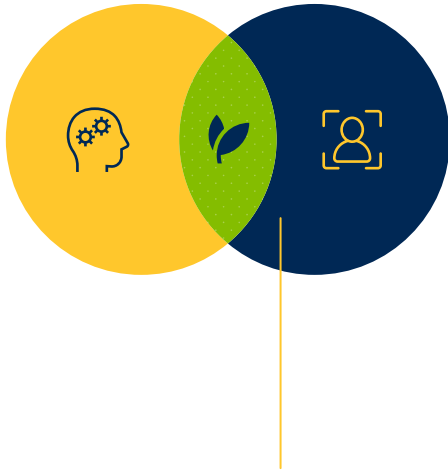


**Tuition Versus Cost:** Tuition revenue alone does not cover the actual cost of educating every student. The orange portion of the graph above represents the "gap."



**Actual Expenses** (2020-2021).

# Connect



To foster an inclusive and supportive community, we will:

- 1) Create meaningful opportunities for internal and external community engagement.
- 2) Advance diversity and social responsibility initiatives.
- 3) Support every child's personal growth and development.



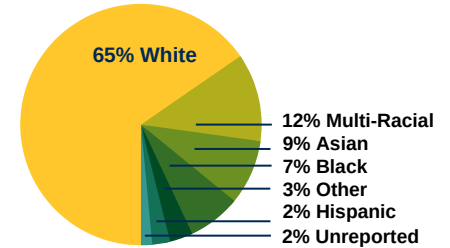
Meaningful community engagement



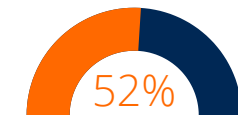
Diversity and social responsibility



Personal growth and development



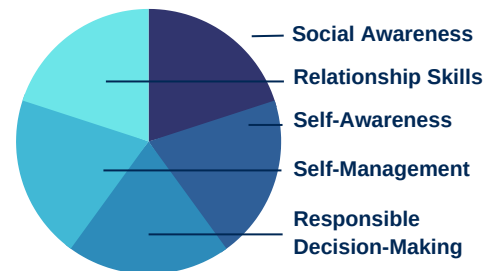
**Student Race and Ethnicity Demographics** (2021).



**Parent Volunteerism:** Percentage of parents who volunteer at Topeka Collegiate (2021).



**Student Volunteerism:** 69% of middle school students volunteer in the community. 100% of all students participate in community service on campus (2020).



**Social-Emotional Learning (SEL) Domains:** Utilized by all teachers (CASEL 2021).



### **Board of Trustees**

Karen K. Linn, President  
Stacey Beatty, PhD  
Jordan Carter '03  
Susan H. Garlinghouse  
Kathleen Heit  
Michael Hooper  
Kent Lammers  
Thomas McBride  
Brooks Pettit  
Marie Pyko  
Dave Sandir  
Michaela Saunders  
Josh Svaty  
Kareem Thomas  
Pete Vobach  
Brandi Wells

## **Thank you to our Strategic Plan Contributors!**

*We appreciate all of the parents, students, family members, alumni, donors, and community partners who also provided survey feedback throughout this process!*

### **Faculty**

Carmen Anello	Elian Mota
Mary Kate Baldwin	Kenneth Park
Ruth Bammes	Sheri Rippel
Kelley Berryman	Shelly Robinson
Rebecca Bonilla	Laura Schwerdt
Jay Carter	Kay Siebert
Brady Drane	Kevin Simons
Dina Dudinyak	Hayley Smith
Jaime Frederick	Kimberly Svaty
Megan Hossain	Blake Zachritz
Marilyn Kido	

### **Staff**

Alesia Arnold	Mindy Johnson
Taylor Bremer	Crystal Kiely
Eric Collazo	Melanie Mullican
Ariel Garrett-Crone	Jennifer Russell
Yumiko Glashausser	Paul Saupe
Tiffany Harrison	

### **Leadership Team**

Dr. Lyn D. Rantz, Head of School	Michael Flax
Jodi Boyd	Leilani Grey
Brittany Crabtree	Debra Ricks